



## MATERIALS NOT PICKED UP CURBSIDE



### HOUSEHOLD HAZARDOUS WASTE

such as motor oil, oil filters, gasoline, wax, cleaners, pool chemicals, pesticides, insecticides, aerosol cans, antifreeze, batteries, etc. can be dropped off at Tillman Ridge or Stratton Rd Transfer Stations.

Oil-based paint, latex paint, fluorescent light bulbs and tires are also accepted with a disposal fee.



### CONSTRUCTION & DEMOLITION

**DEBRIS** can be taken to either of the following locations (fees apply):

#### Tillman Ridge Transfer Station

3005 Allen Nease Rd.  
Elkton, Florida 32033

#### Stratton Rd Transfer Station

250 N Stratton Rd.  
St. Augustine, Florida 32095

Contact: (904) 827-6980



### PHARMACEUTICAL TAKE BACK

**PROGRAM** Permanent Drop Box located at:

#### St. Johns County Sheriff's Office

Main Lobby  
4015 Lewis Speedway  
St. Augustine, Florida 32095  
(904) 209-1551

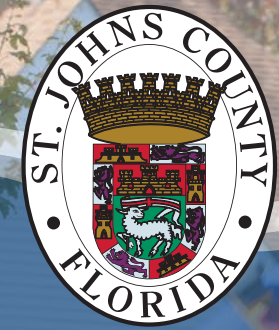
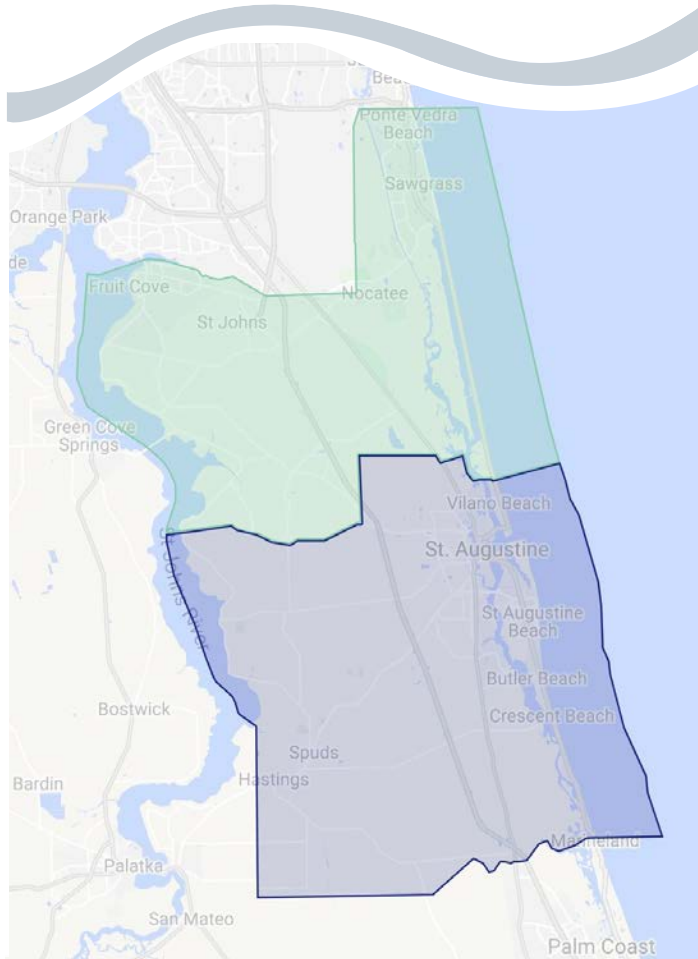
No Sharps or Nuclear Medications are accepted at the Sheriff's office.

## SERVICE PROVIDERS

**Republic Services** services residents in the northern half of St. Johns County (north of the St. Johns River following CR 208 & north of SR 16 to the ocean) and can be reached at (904) 825-0991.

**Waste Management** services residents in the southern half of St. Johns County (south of the St. Johns River following CR 208 & south of SR 16 to the ocean) and can be reached at (904) 827-1005.

To request a recycle cart or to obtain your scheduled service days, please contact your provider directly or visit [recyclestjohns.com](http://recyclestjohns.com).



# St. Johns County Solid Waste Division

## RESIDENTIAL GUIDELINES Garbage, Recycling, & Yard Waste

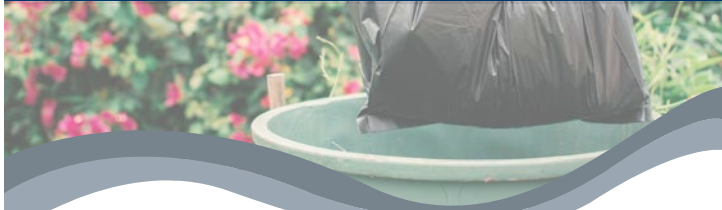
P: (904) 827-6980 | F: (904) 827-6981

E: [solidwaste@sjcfl.us](mailto:solidwaste@sjcfl.us)

[www.recyclestjohns.com](http://www.recyclestjohns.com)



SCAN ME



## GARBAGE

Place all household garbage into trash cans or plastic trash bags and secure properly to prevent scattering by animals or wind.

Place cans/bags curbside within 3 to 5 feet from the roadway.

Loose (unbagged) garbage will not be collected in a garbage receptacle larger than 32 gallons. (Excluding large item pick-up.) No can or bag may exceed 50 lbs.



All Garbage, Recycling, & Yard Waste must be separated by resident and placed curbside by 6 a.m. on the scheduled collection day.



## RECYCLING

Place recyclable materials loose (unbagged) in your recycling carts provided by your service provider. Place the cart no more than three (3) feet from the curb.

### Recyclables include the following:

**PAPER + CARDBOARD:** Newspapers, magazines, catalogs, telephone books, office paper, cereal/food boxes, & flattened cardboard.

**PLASTIC CONTAINERS:** Food and beverage containers, detergent bottles, jugs, and empty pill bottles.

**METAL:** Aluminum & metal food and beverage containers only.

**CARTONS:** Milk cartons, juice boxes, soup, broth, and wine cartons.

**GLASS:** Bottles & jars (clear, green and brown) only.

### RECYCLE RIGHT!

Be sure to **EMPTY & CLEAN** recyclables. **NO PLASTIC BAGS OR STYROFOAM**



## YARD WASTE

### INCLUDE:

Leaves, grass clippings, twigs, and small pieces of yard waste bagged, bundled, tied or in a garbage receptacle no larger than 32 gallons and 50 lbs.

Branches, shrubs and stumps less than 6 ft in length and lighter than 50 lbs stacked in neat piles parallel to the curb.

Palm fronds stacked in neat piles with the fan portion facing away from the curb.

### DO NOT INCLUDE:

Whole trees, land clearing debris, yard waste heavier than 50 lbs. or more than 6 ft., unbagged or non-containerized small pieces of yard waste, fencing, landscape timbers, garden hoses, planters & yard decorations.

Never put yard waste in your recycling cart or in front of vacant lots.



## DROP OFF LOCATIONS

All residential garbage, hazardous waste, electronics, cardboard boxes, white goods, bulky items, yard waste, and construction debris may be brought to either of the St. Johns County Transfer Stations for disposal during operating hours. (Fees may apply.)

**Tillman Ridge Transfer Station**  
3005 Allen Nease Rd. Elkton, Florida 32033

**Stratton Rd Transfer Station**  
250 N Stratton Rd., St. Augustine, Florida 32095

**Hours of Operation**  
M-F: 7 a.m. – 6 p.m. | Saturday: 7 a.m. – 1 p.m.



## LARGE ITEM PICK-UP

Recycle appliances curbside by scheduling a collection with your service provider.

Place large, bulky items out at the curb next to your regular garbage. This includes couches, sectionals, mattresses, household furniture, etc.



## EVENTS & EDUCATIONAL OUTREACH

Events and educational presentations are offered throughout the year to promote community involvement and educational outreach:

- Community Collection Days
- Facility Tours
- Presentations for schools, HOAs and Community Groups
- Mascot Outreach Appearance
- Adopt-A-Road Program
- Community Events
- Educational Outreach Programs
- Volunteer Program
- American Flag Rescue Program



The Curbside Times  
SOLID WASTE DIVISION  
MONTHLY NEWSLETTER



P: (904) 827-6980 | F: (904) 827-6981 | E: solidwaste@sjcfl.us  
www.recyclestjohns.com